

PART OF N.E. 1/4 OF SECTION 29, T.7N., R.1W., S.L.B.&M.

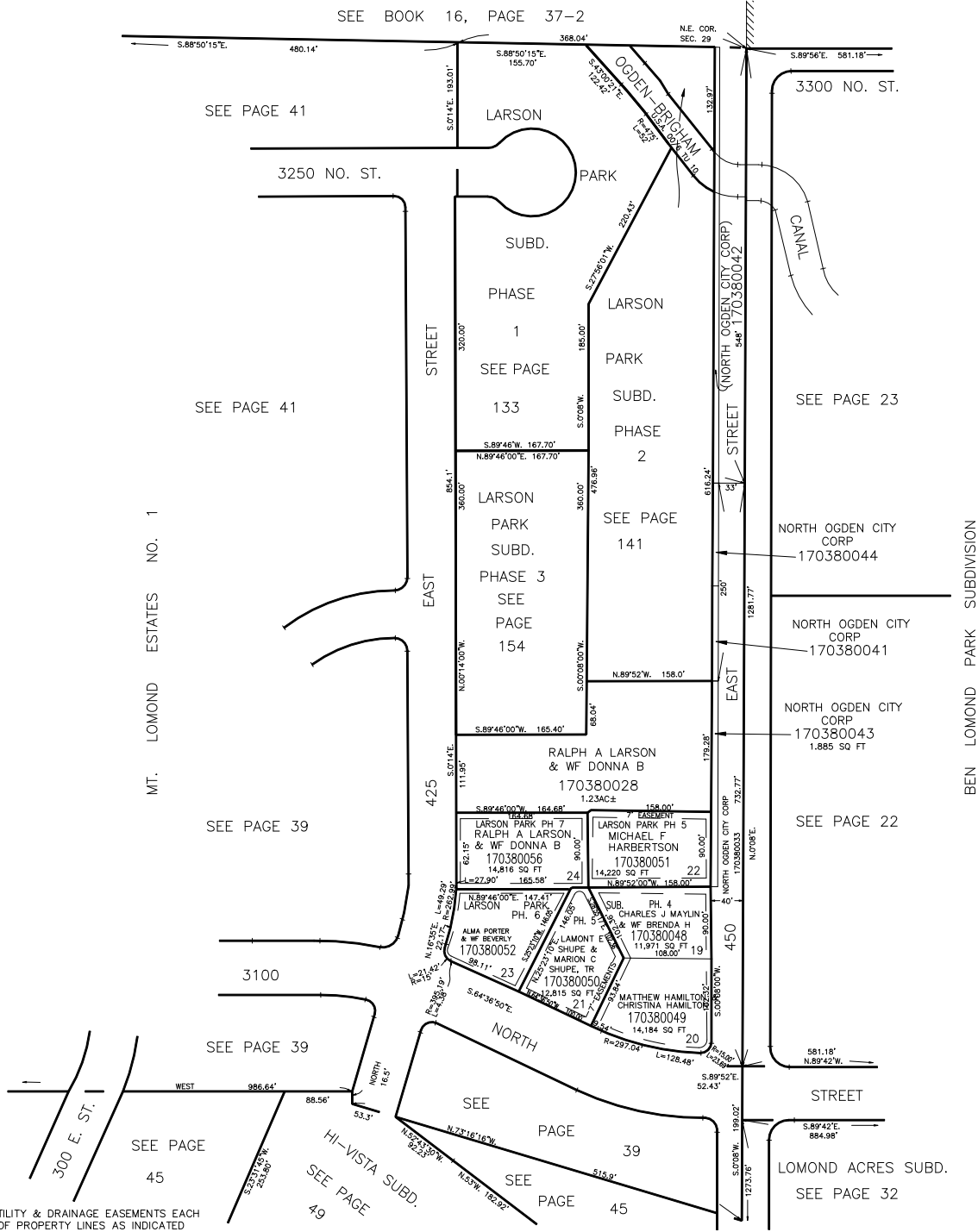
IN NORTH OGDEN CITY

SCALE 1" = 120'

TAXING UNIT: 10

ALSO SEE PAGES 38-2,3

SEE BOOK 16, PAGE 37-2



FOR COMPLETE ENG DATA SEE ORIGINAL DEDICATION PLAT IN BOOK 16, PAGE 37-2 OF RECORDS.

10' UTILITY & DRAINAGE EASEMENTS EACH SIDE OF PROPERTY LINES AS INDICATED BY DASHED LINES EXCEPT AS OTHERWISE SHOWN.